

# P in-Female Header 1.27 mm



RoHS

PinHeader1.27mmSQPin=0.46mm2 RowH=2.5mm Stack Straight Type

TOPTEK®  
HARDWARE ELECTRONIC MANUFACTURER



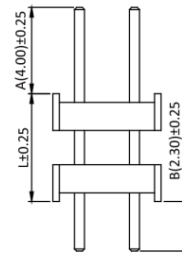
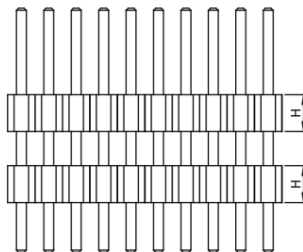
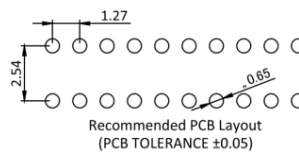
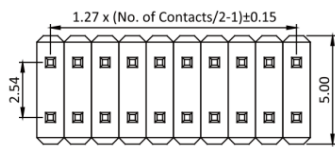
www.toptek-co.com

## Specifications

Current Rate:1 AMP  
Insulation Resistance:1000MΩ Min.  
Contact Resistance:20mΩ Max.  
Dielectric Voltage:500V AC for one minute  
Operation Temperature:-40°C to +105°C

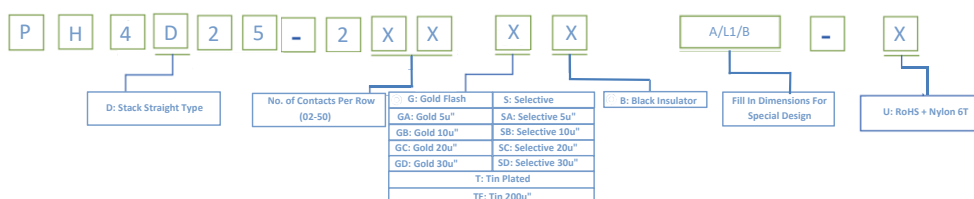
## Material

Insulator:Hi-Temp. Thermoplastic, UL 94V-0  
Terminal:Copper Alloy  
Plating:Gold Plated



Part No.:PH4D25-2XX-U

## ORDER INFORMATION



©:Standard Recommend